



# **The Cyprus Sheep And Goat Sector**

**Dr. Georgia Hadjipavlou**  
**Agricultural Research Institute,**  
**Cyprus**

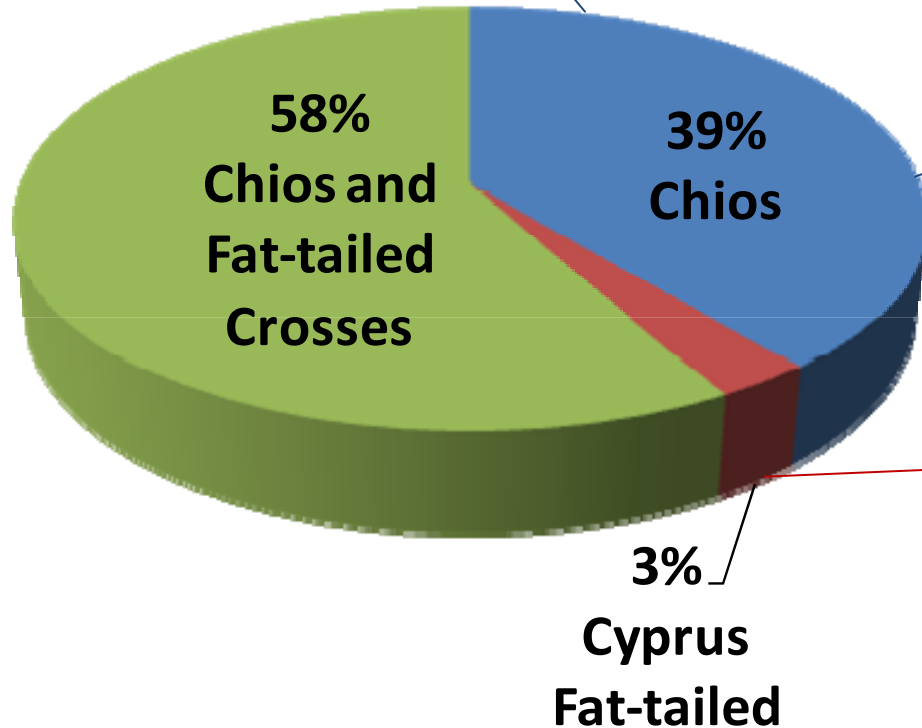
**DoMesTiC Consortium Meeting, 4-5 July 2012 Ioannina**

# Introduction

## The sheep and goat sector:

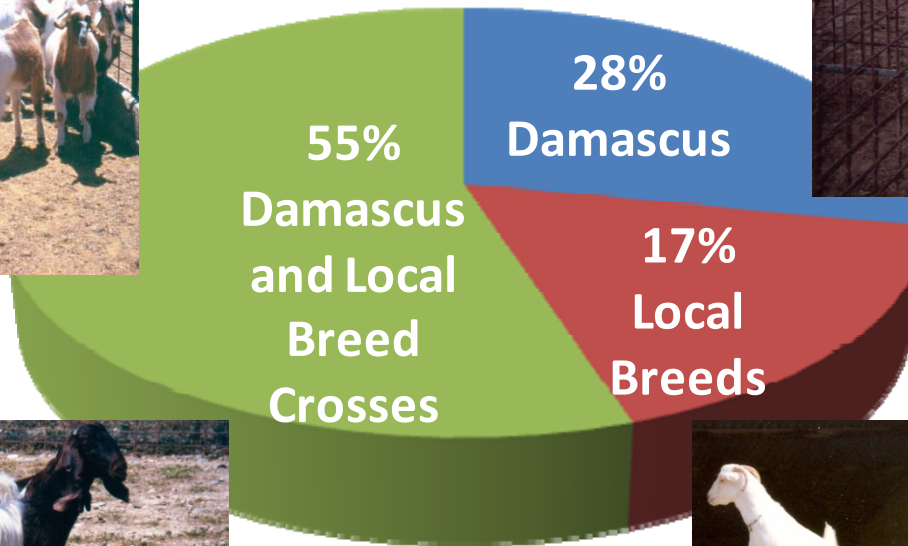
- Important part of animal production in Cyprus
- Contributes ~18% to the total value of animal production
- Faces challenges of different types
- Does not fulfill its full economic and production potential

# Breed Composition of Sheep





# Breed Composition of Goats



# Sheep and Goat Populations

## Sheep population

- Stabilised around 300,000
- 30-year record low between 1995-2000 (mean 244,000)

## Goat population

- 280,000 in 2009, exhibiting downward trend
- 30-year record high between 1999-2003 (mean 404,000)
- Recent population changes associate with management of scrapie disease
- Population trends correlate with meat and milk production

# Sheep and goat products

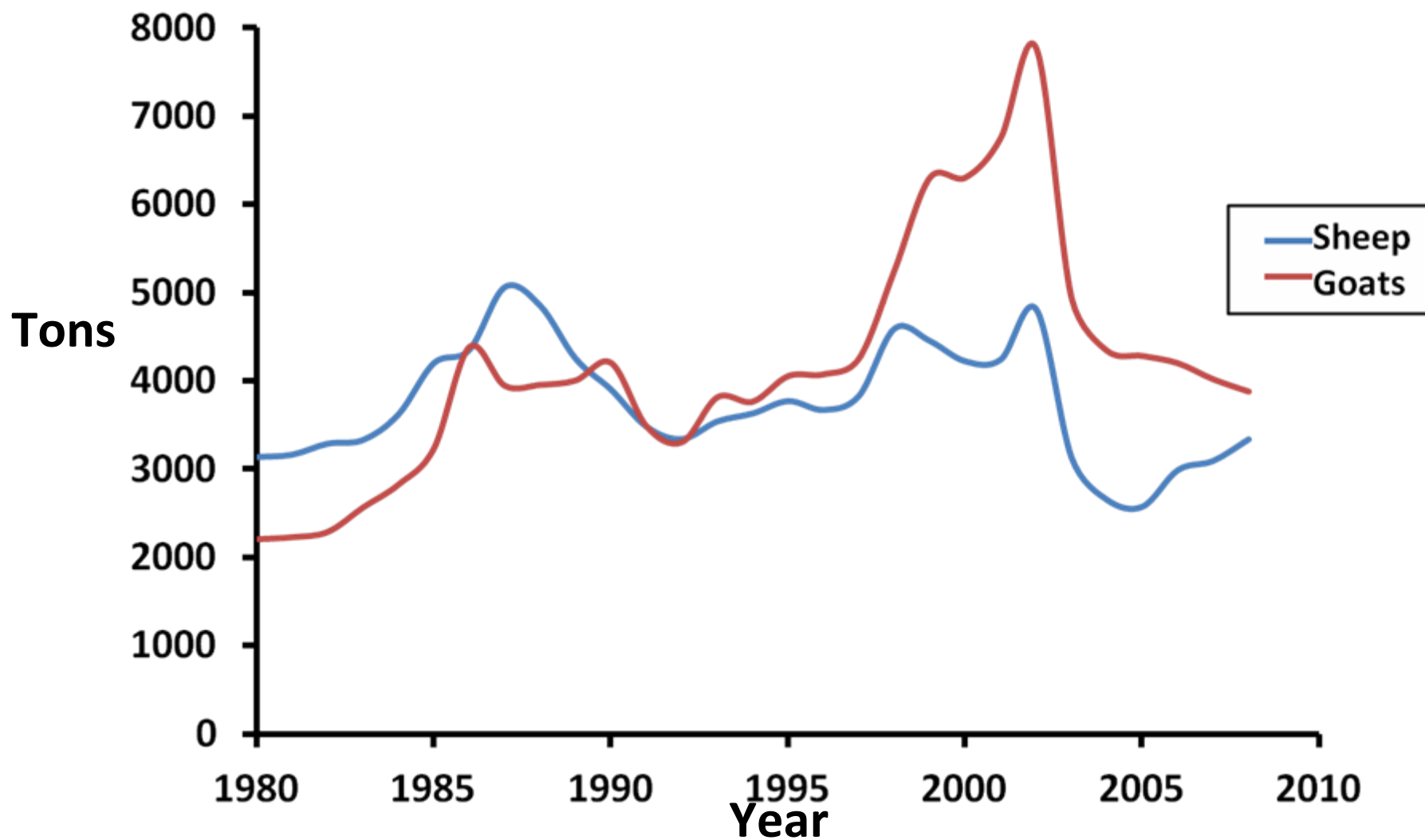
## Meat production

- Covers ~90% of consumer demand
- Corresponds to 7% of total meat production
- Contributes 10% to the total value of animal production



# Sheep and goat products

## Meat



# Sheep and goat products

- Animals slaughtered

Species	Number
Lambs	134 484
Kids	140 997

- Majority of lambs and kids slaughtered at 3-6 months old

- Carcass categories

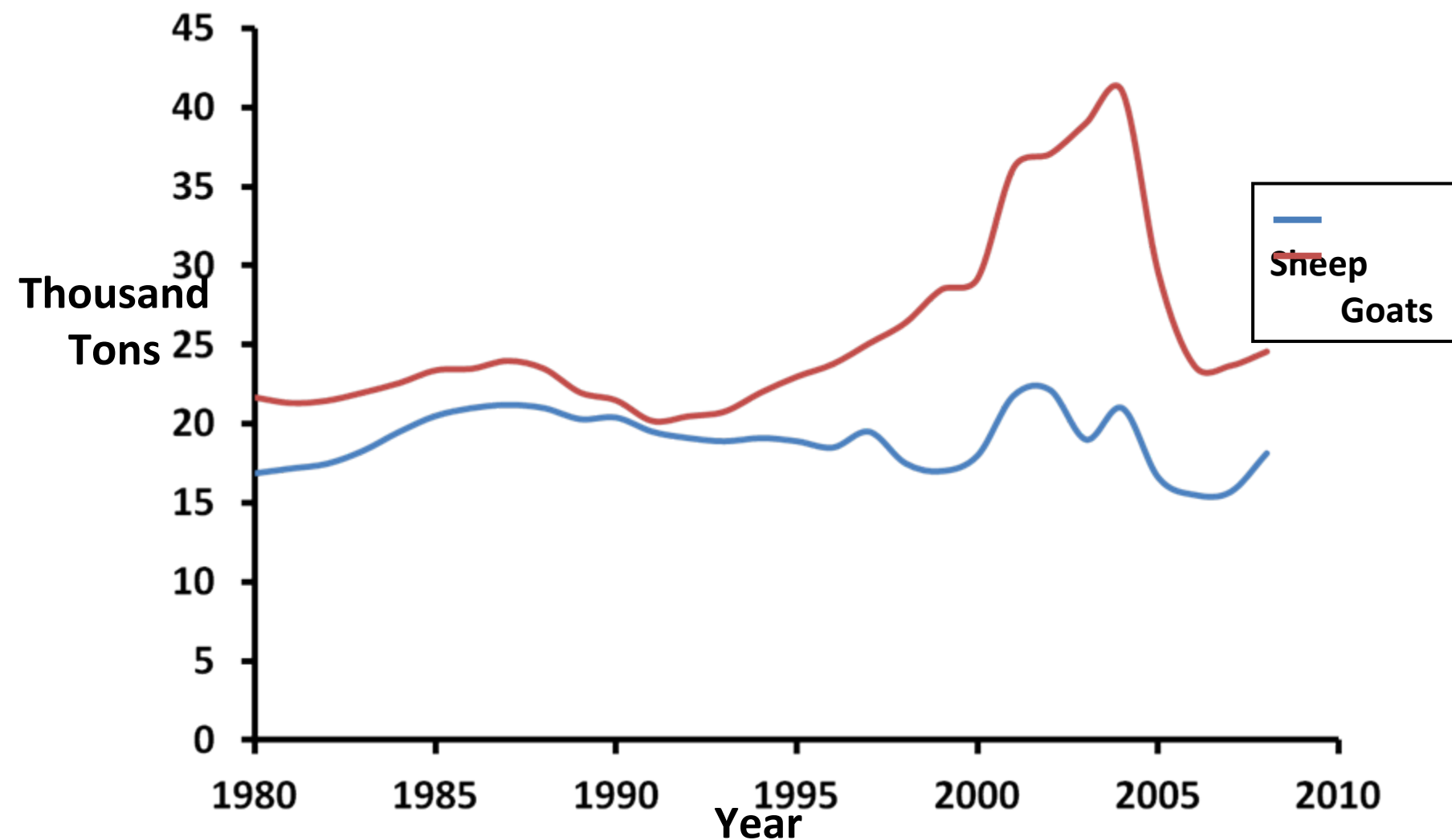
Age Category (months)	Percentage Slaughtered	Average Carcass Weight
0-3	8%	13.0
3-6	65%	15.0-18.0
6-9	15%	25.0
9-12	12%	35.0

- Increased demand around Christmas and Easter



# Sheep and goat products

## Milk



# Value of sheep and goat products

## Quantities and Values

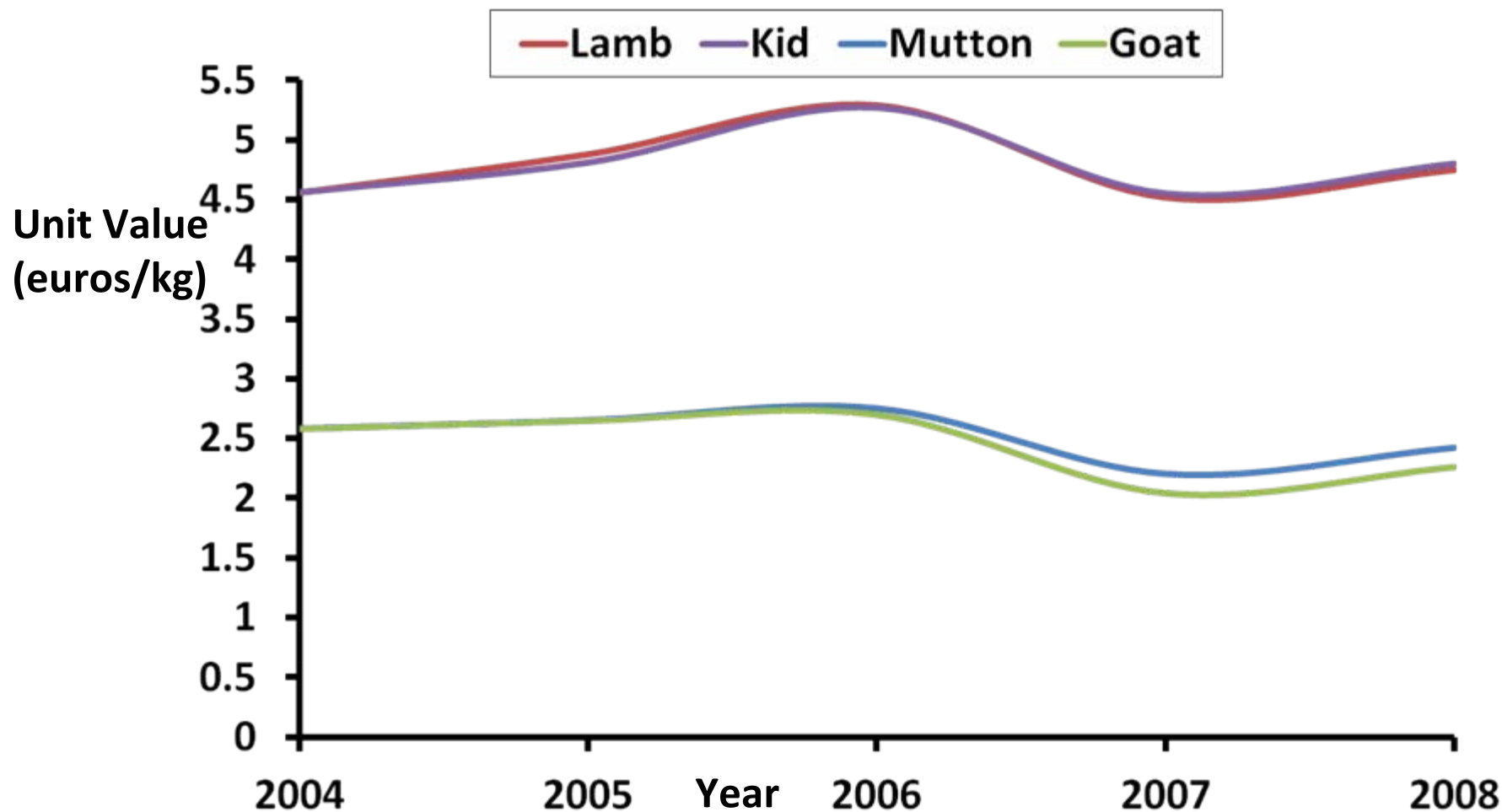
Source		Quantity (tons)	Value ( € 000 ´s )	Total value (€ 000 ´s)
Sheep	Meat	3337	14294 (47.8 %)	29909
	Milk	18136	15615 (52.2%)	
Goat	Meat	3874	16097 (54.9 %)	29332
	Milk	24581	13225 (45.1%)	

### Sheep and goat milk:

- Corresponds to 22% of total milk production in Cyprus
- Contributes 8% to the total value of animal production

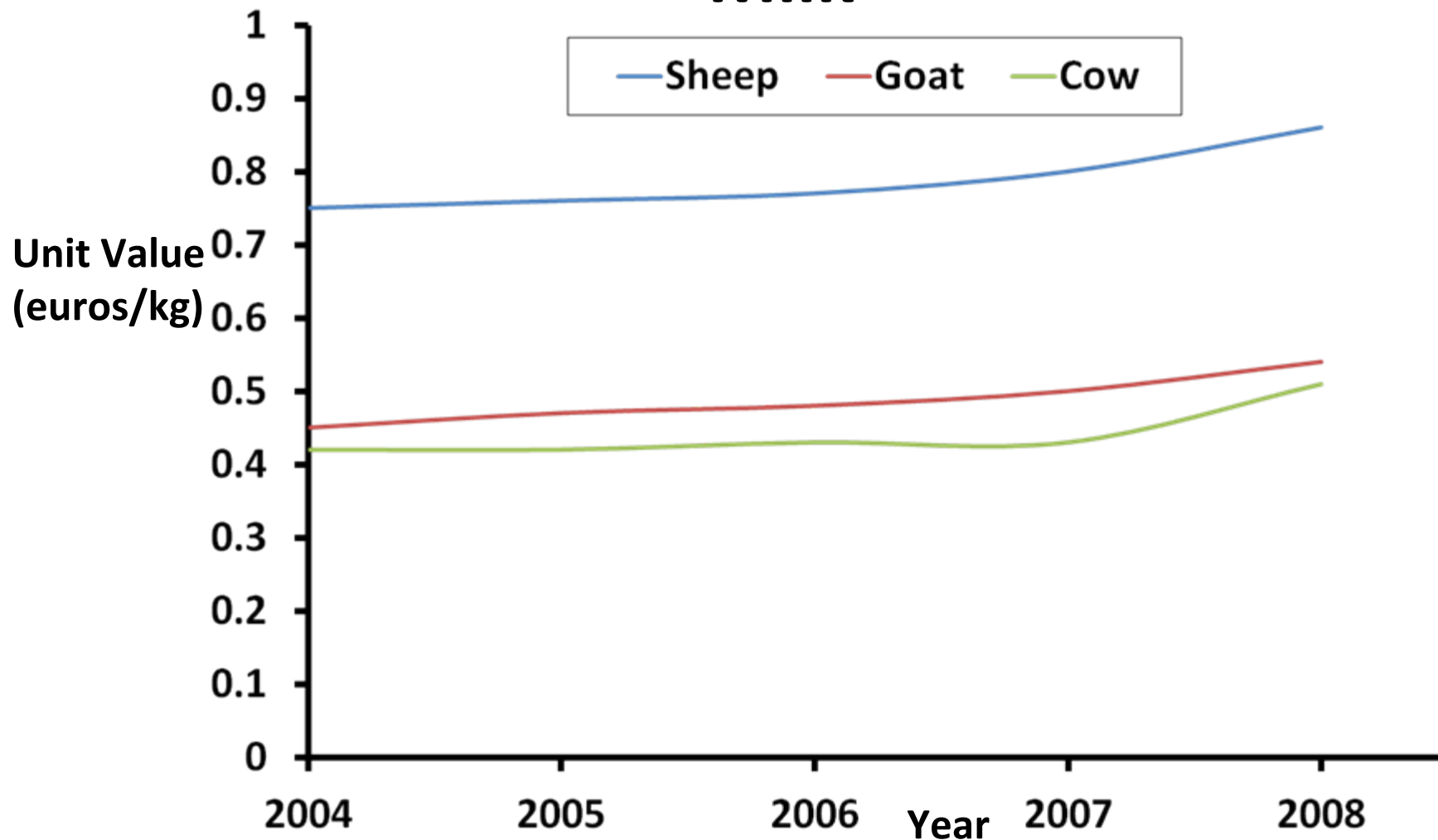
# Value of sheep and goat products

## Meat



# Farm-gate price of raw milk

## Milk



# Sheep and Goat Farm Description

Animals Kept	Average flock size	Percentage of total farm units (%)
Sheep	150	21
Goats	110	46
Sheep & Goats	198 (106 & 92)	33

➤ Only 20% of milk produced is processed on farm

## Main products:

- Local haloumi cheese
- Yogurt
- Anari (whey cheese)





# **Trends and Challenges for the Sheep and Goat Sector**

- X Declining number of farming units**
  - **34% reduction from 2000 to 2008**
- X Ageing farmers' population**
- X Variable climatic conditions**
  - **roughage production**
  - **natural vegetation availability**
- X Farming systems not sustainable as implemented**
- ✓ Family business a strong element of sheep and goat farming**

## ➤ Farming Systems

### a) Semi-intensive (high input)

- High input in capital (animal feed) and labour
- Less investment in infrastructure and technology

❖ **Sensitive to fluctuations in feed prices**

### b) Semi-extensive (medium input)

- Restricted use of natural vegetation
- Roughage and silage production (rain-fed crops)

❖ **Sensitive to climate change (e.g. drought effects)**

### c) Extensive (low input)

- Exploitation of natural vegetation
- Concentrate supplements during critical periods

❖ **Only 5-10% of farms (mostly goats)**

# DoMesTlc Aims and Prospects

**Which actions are needed to ensure competitiveness and sustainability?**

**A) For sheep and goats:**

- **Breeding healthy, disease resistant animals (e.g. Scrapie)**
  - **Assessing genetic management**
- **Conservation of local breeds /genetic resources (well-adapted to climatic conditions/changes)**
  - **Recording the attributes of various farming systems**
  - **Evaluate traditional knowledge and farmers' ability to respond to change**

# DoMesTlc Aims and Prospects

**Which actions are needed to ensure competitiveness and sustainability?**

## **B)For sheep and goat products:**

- **Higher on-farm processing of milk products**
- **Added value of sheep and goat products**

## **C)For sheep and goat farmers:**

- **Incentives for young individuals to continue family business**
- **Guidelines for supporting new sheep and goat farmers**
- **Enhanced education, knowledge transfer and extension services**

**Thank you for your attention**

